

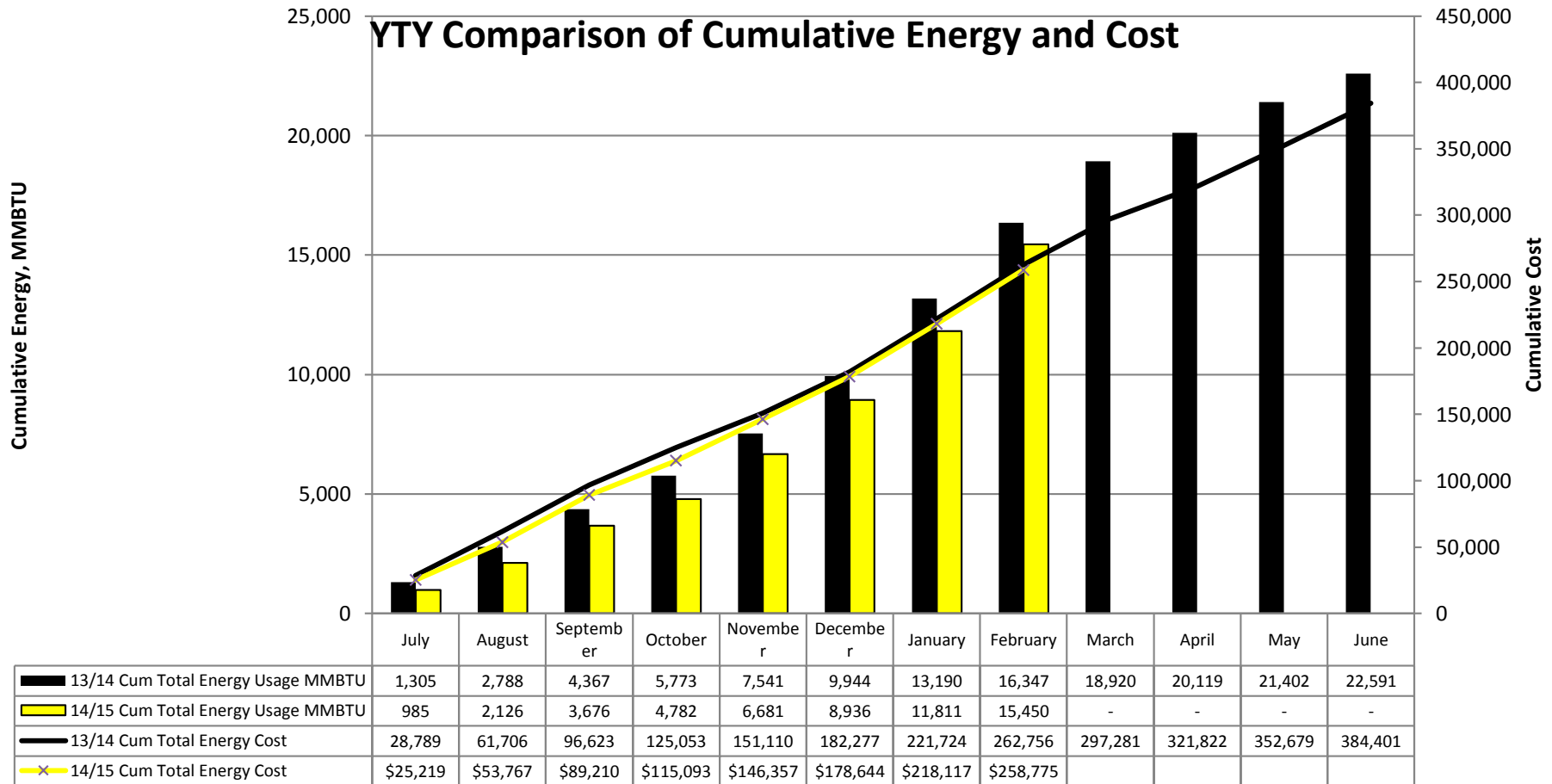
# Carroll County Energy Report Card

March 2015 Report for February  
2015 Usage

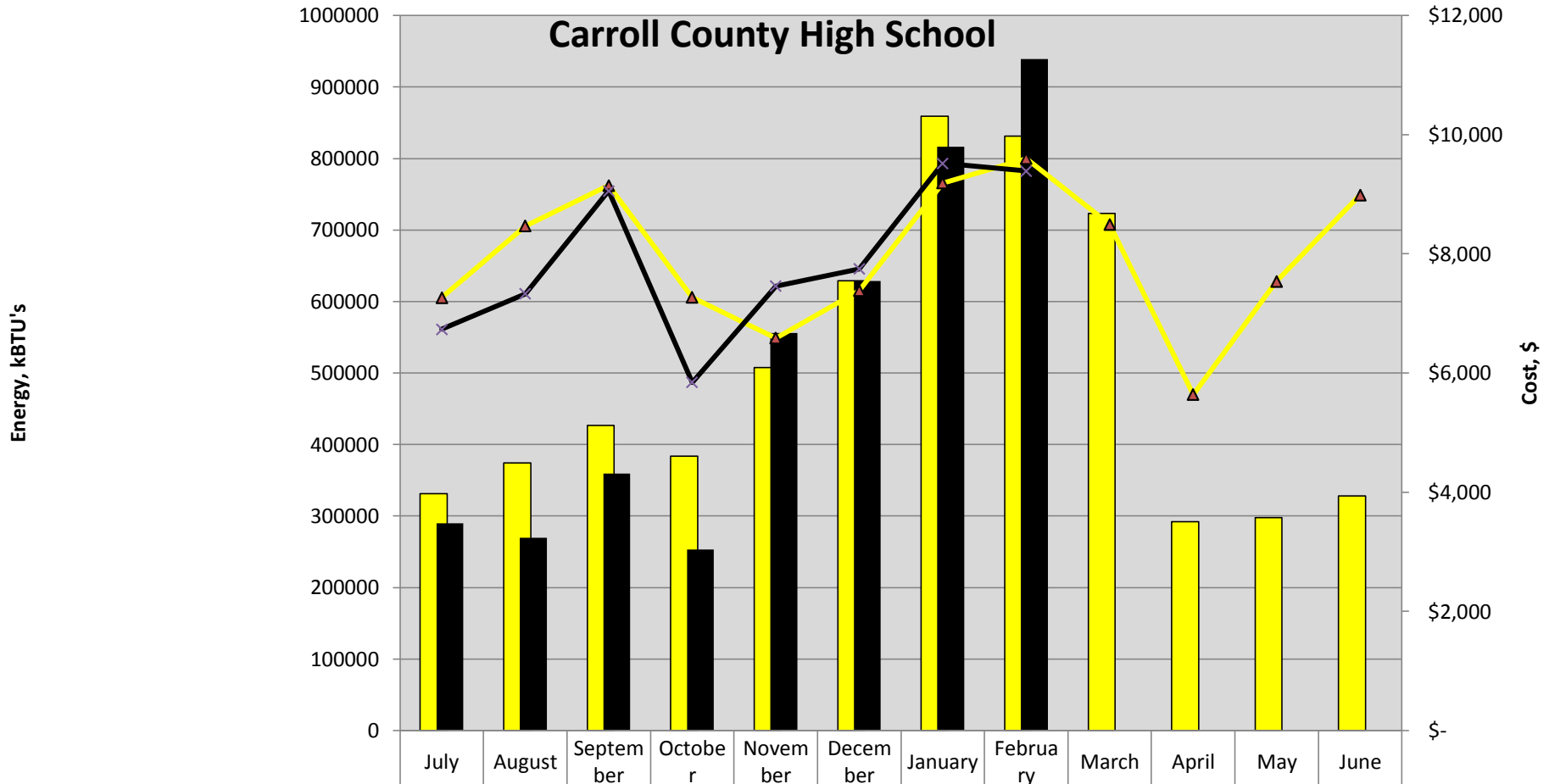
# Monthly Energy Report

- The March 2015 report for February 2015 usage is attached.
- February 2015 was much colder than February 2014. This February was 14% colder, however, the district used \$374 less energy.
- The district continues to have a great year. February pushed the current cumulative fiscal year total of heating and cooling degree days over the first eight months of last fiscal year. As of the end of February, this fiscal year is now 2.1% colder\warmer than last fiscal year, but the district overall energy use is down 5.4%.

# YTY Comparison of Total Cumulative Energy and Cost

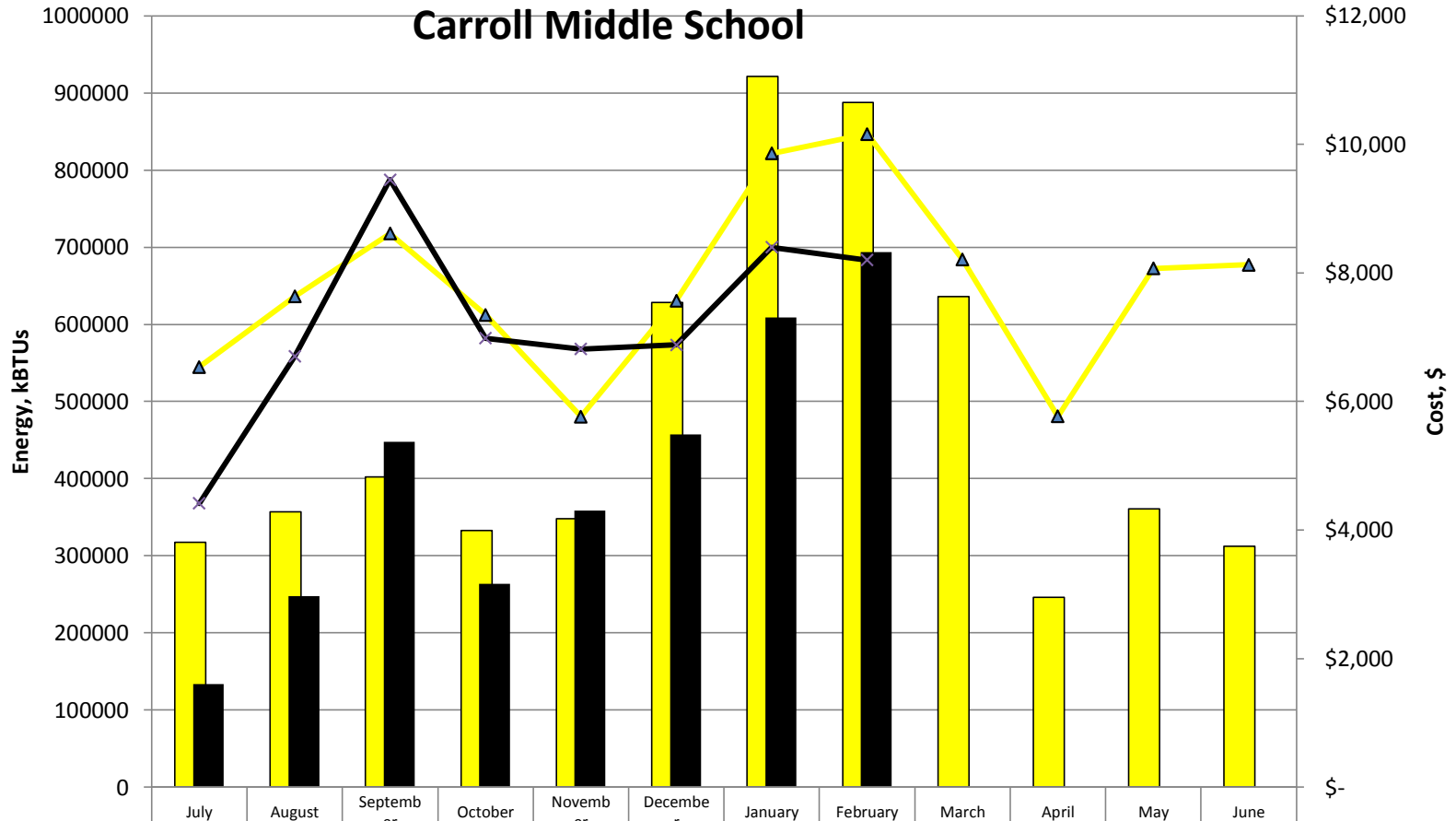


# Carroll County High School



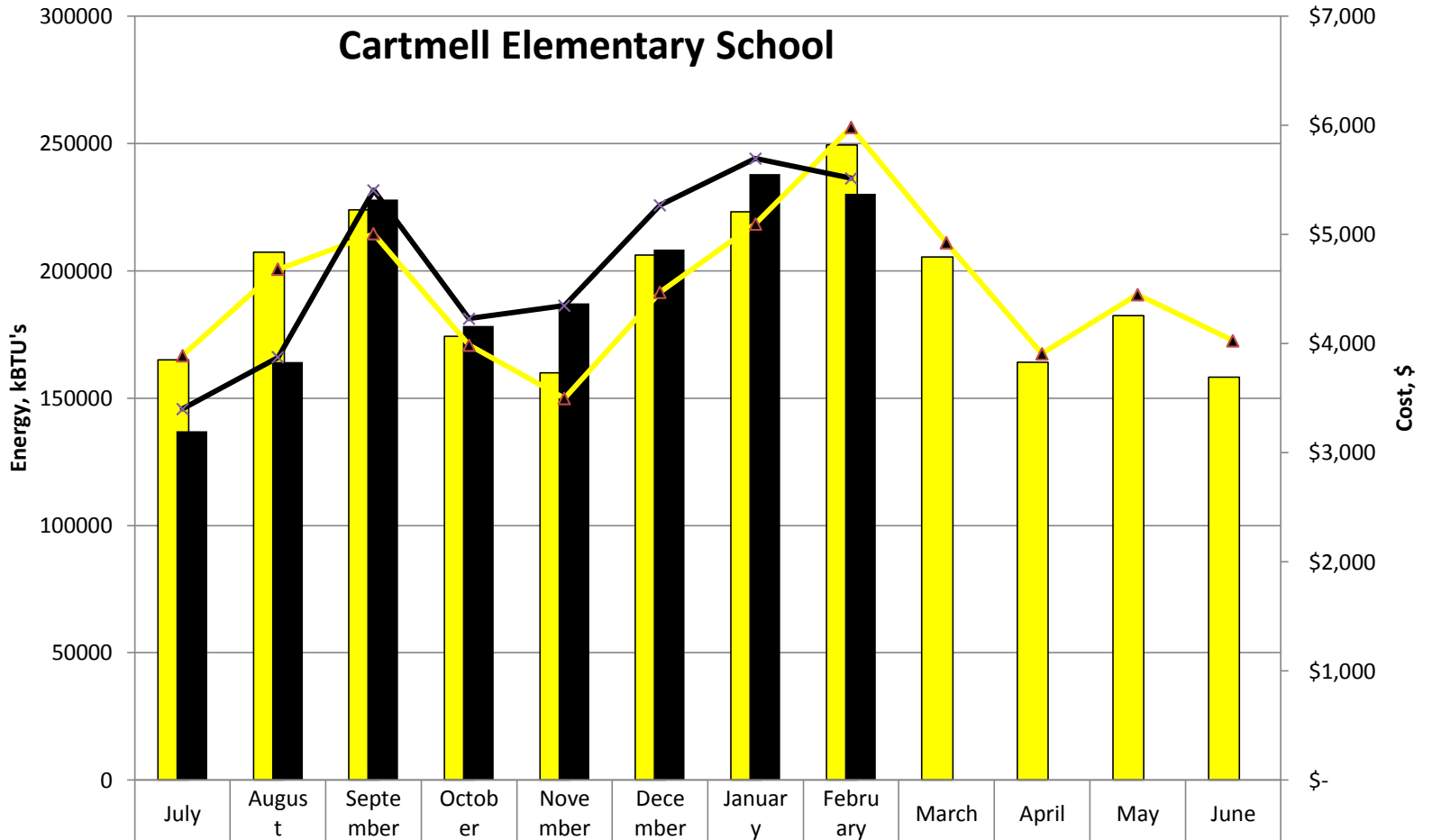
2013/14 Total Energy Usage (kBTU)	331051	374265	426747	383751	507692	629208	858932	831223	723396	292060	298006	328198
2014/15 Total Energy Usage (kBTU)	289792	269394	359207	253162	556284	628985	816534	939174	0	0	0	0
2013/14 Total Cost	\$7,264	\$8,468	\$9,148	\$7,268	\$6,585	\$7,384	\$9,187	\$9,599	\$8,493	\$5,640	\$7,539	\$8,986
2014/15 Total Cost	\$6,736	\$7,329	\$9,054	\$5,845	\$7,457	\$7,747	\$9,519	\$9,391				

# Carroll County Middle School



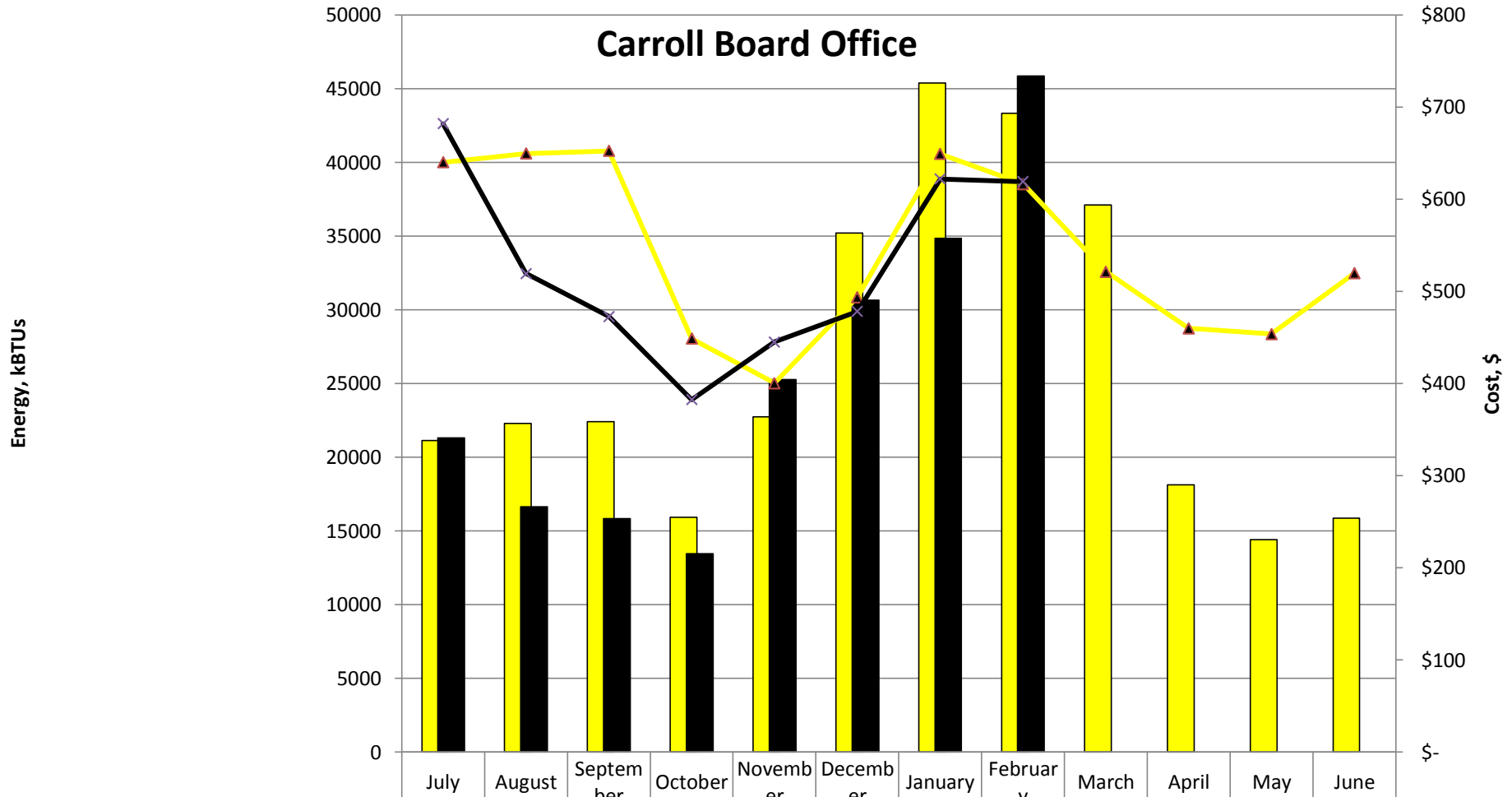
2013/14 Total Energy Usage (kBTU)	317370	356799	402227	332844	348080	628540	921393	887851	635701	245901	360639	312505
2014/15 Total Energy Usage (kBTU)	133525	247913	447435	263894	358440	457045	608886	693516	0	0	0	0
2013/14 Total Cost	\$6,535	\$7,635	\$8,611	\$7,348	\$5,765	\$7,569	\$9,859	\$10,162	\$8,207	\$5,768	\$8,070	\$8,128
2014/15 Total Cost	\$4,414	\$6,702	\$9,448	\$6,982	\$6,818	\$6,882	\$8,400	\$8,201				

# Cartmell Elementary School



2013/14 Total Energy Usage (kBTU)	165005	207379	223925	174315	159848	206211	223107	249472	205432	164072	182498	158191
2014/15 Total Energy Usage (kBTU)	136994	164212	227952	178314	187172	208277	237940	230203	0	0	0	0
2013/14 Total Cost	\$3,888	\$4,680	\$5,006	\$3,987	\$3,498	\$4,471	\$5,097	\$5,981	\$4,922	\$3,908	\$4,448	\$4,027
2014/15 Total Cost	\$3,400	\$3,874	\$5,405	\$4,230	\$4,348	\$5,269	\$5,695	\$5,516				

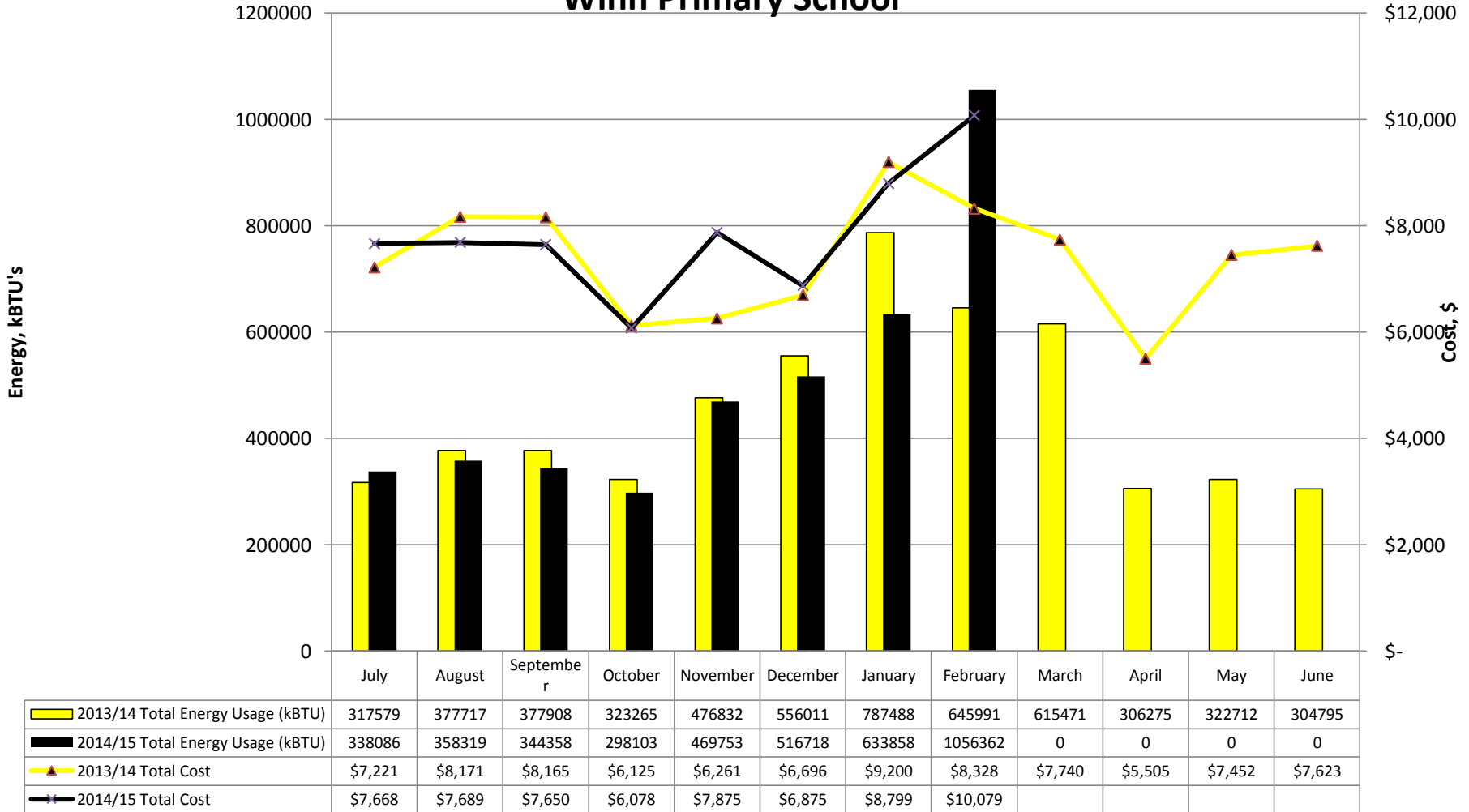
# Carroll County Board Office



2013/14 Total Energy Usage (kBTU)	21143	22297	22400	15921	22726	35210	45376	43321	37111	18113	14400	15851
2014/15 Total Energy Usage (kBTU)	21300	16632	15835	13445	25282	30645	34860	45855	0	0	0	0
2013/14 Total Cost	\$640	\$650	\$652	\$449	\$400	\$494	\$649	\$616	\$521	\$460	\$454	\$520
2014/15 Total Cost	\$682	\$519	\$473	\$382	\$445	\$478	\$622	\$619				

# Winn Primary School

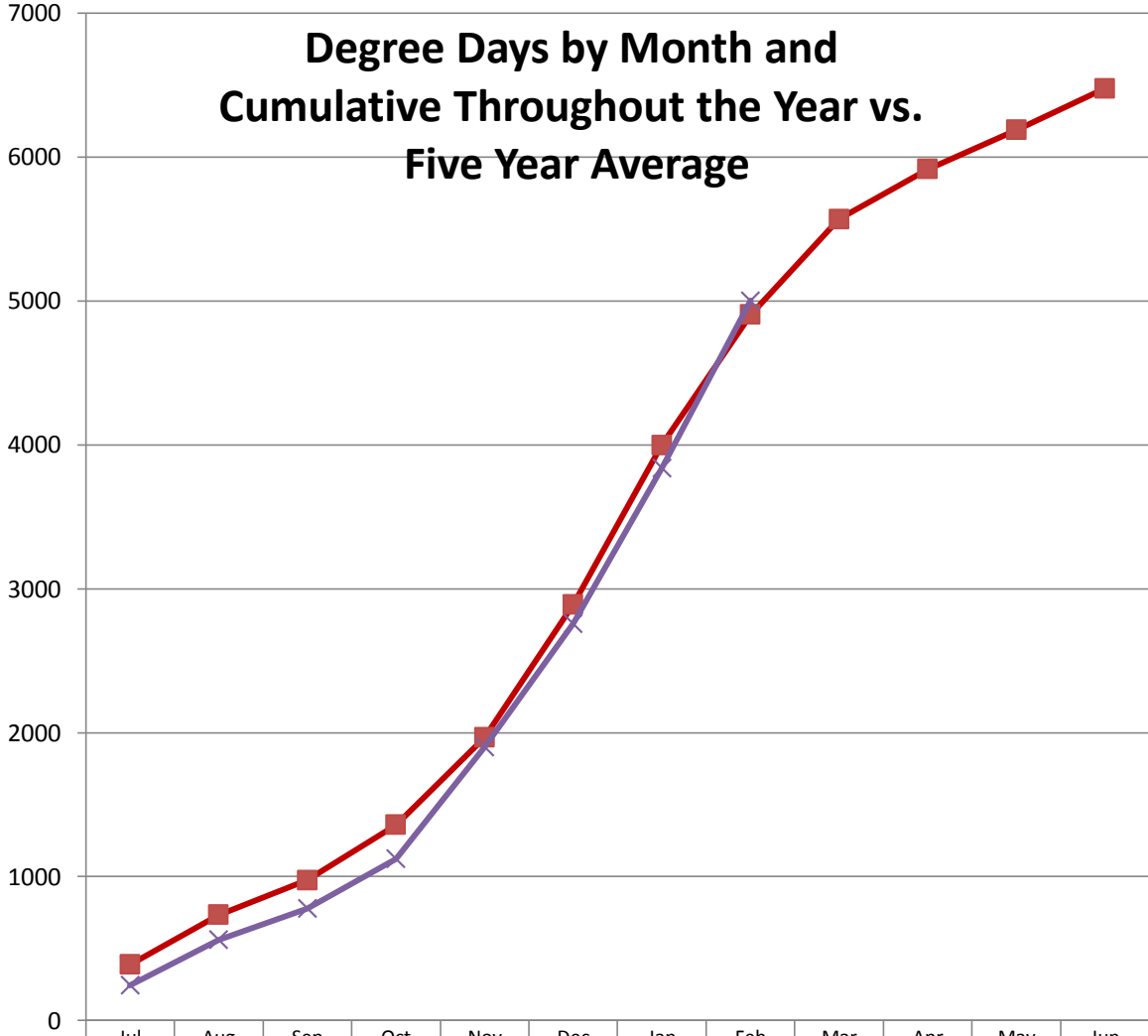
## Winn Primary School





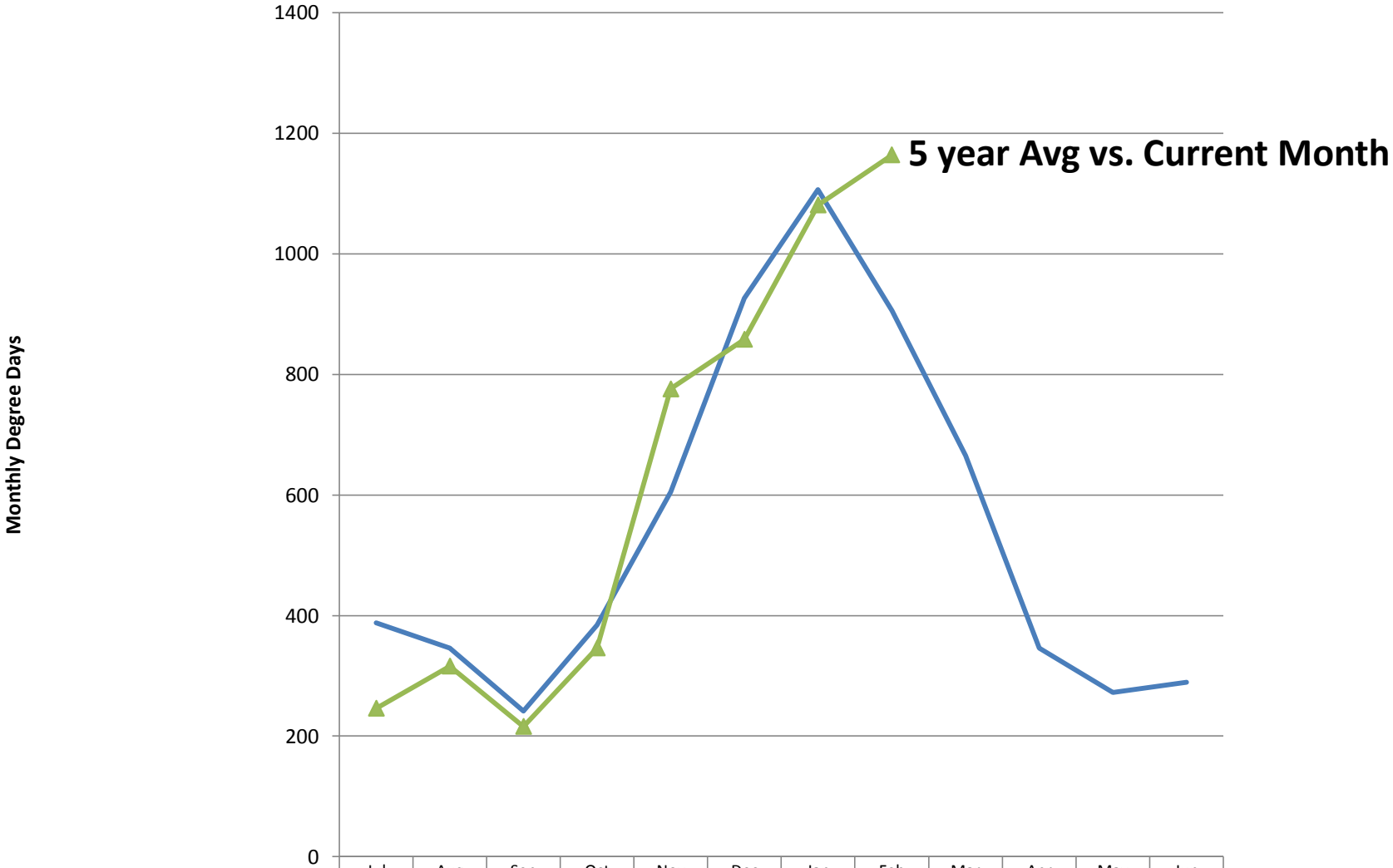
# Degree Days Chart #1

Monthly Degree Days



■ 5 Yr Average Cumulative Degree Days	388	734	976	1360	1965	2892	3998	4904	5569	5915	6188	6477
× Current Year Cumulative Degree Days	246	562	778	1124	1900	2758	3839	5003				

# Degree Days Chart #2



	Jul	Aug	Sep	Oct	Nov	Dec	Jan	Feb	Mar	Apr	May	Jun
5 Yr Avg Degree Day by Month	388	346	241	385	605	926	1106	906	665	346	272	289
Current year Degree Day by Month	246	316	216	346	776	858	1081	1164				

# Degree Days Chart #3

